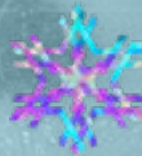


Liechtensteiner
Eislauf-Verband



**First Liechtenstein ISU-Development-Figure-Skating-Camp
for small nations and federations for Novice and Junior
in Flims Switzerland** 21.07. - 27.07.2024



Supported By:



LEV

Liechtensteiner Eislauf-Verband
Patrik Kaiser
Platta 41
FL – 9488 Schellenberg
m: +423 791 79 81
email: info@eislaufen.li

Liechtensteiner
Eislauf-Verband

www.eislaufen.li



Schellenberg, 24.06.2024

Invitation:

First Liechtenstein ISU-Development-Figure-Skating-Camp for small nations and federations 2024

Dear friends of figure skating in small nations and smaller federations in Europe

We are happy to announce that the "First Liechtenstein Figure Skating Development Camp for Small Nations and Federations 2024" will take place, supported by the ISU Development Program.

As part of the ISU Development Program, we are pleased to invite your federation to participate in our figure skating training camp. The camp will be held from Sunday, July 21st to Saturday, July 27th, 2024, in Flims, Switzerland. This event is made possible through the generous financial support of the ISU to foster young talent and support their development in figure skating, and to help the Small Nations community develop ice skating in their countries.

The ISU Development Project will take place as a stand-alone camp during the international figure skating training camp "Super Summer Camp Flims," which runs over a period of five weeks from July 6th to August 10th, 2024. For more information about the Super Summer Camp 2024 in Flims, please visit figureskatingcamp.com.



Event Details:

- **Arrival:** Saturday, July 20, 2024
- **Camp Duration:** From Sunday morning, July 21 to Saturday evening, July 27, 2024
- **Departure:** Sunday, July 28, 2024
- **Location:** Sportzentrum Prau la Selva, Via Prau la Selva 6, 7018 Flims Waldhaus, Switzerland (60 km from Liechtenstein) <https://sportzentrum-flims.ch>
- **Target Group:** Young athletes at the Novice and Junior levels, as well as their coaches from small European nations and smaller skating federations, are invited to participate.
- **Maximum Participants:** 28 (14 novices and 14 juniors), with priority given to small countries, small nations, and neighboring countries
- **Costs for Participants:** CHF 300 participation fee plus CHF 300 for accommodation, **totaling CHF 600 for the camp and accommodation**, including breakfast and one meal. These moderate prices are made possible thanks to ISU support!
- **Cost for accompanying coaches:** CHF 150 participation fee plus self-accommodation (see accommodation details below).
- **Ice times for training:** Additional patches on request are possible to book as long as there are free places.
- **Simultaneous training for accompanying coaches**
- **Focus on Program Components, Composition and Presentation, as well as “Level” steps, spins, and jumps**
- **Accommodation in two houses** with opportunities to build community.
- **Initiation of the promotion of figure skating development in small nations and federations through regular exchange**

Travel

Athletes, coaches and officials will be responsible for all travel expenses.

Contact and Inquiries

By email to: info@eislaufen.li

Goals of the Training Camp:

The training camp aims to comprehensively support young talents at the Novice and Junior levels. It provides them with the opportunity to improve their technical skills and learn from a highly qualified coaching team. The focus is on program components, composition, and presentation, as well as specific elements like steps, spins, and jumps. Additionally, participating coaches will gain valuable insights and further training to sustainably support the development of figure skating in their home countries. Through intensive training sessions and interactive workshops, the athletes' performance capabilities will be enhanced, and the quality of their presentations improved. Finally, the camp is an opportunity for small nations and federations to discuss the issues they face, consider how these issues can be addressed, and make connections with others from similar-sized federations.

Coaching Team:

We are pleased to offer an excellent team of trainers for this special training week, focusing on program components, composition, and presentation, as well as “Level” steps, spins, and jumps. Our coaching team includes:

- **Elena Romanova** (AUT/SWI), Head Coach
- **Marius Negrea** (ROM/GER), Head Coach
- **Leanna Caron** (CAN), experienced ISU Referee, one of the architects of the new 3 program components, Components (Sunday, 20.07.2024)
- **Myriam Loriol Oberwiler** (SUI), experienced ISU Technical Specialist, Head Coach
- **Sabrina Messmer** (SUI), Off-Ice Dance and Choreographer
- **Mikhail Semenov** (UKR), Off-Ice Acrobatics and Fitness



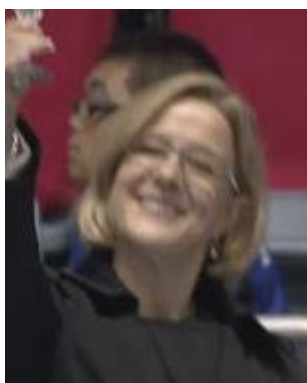
Elena Romanova



Marius Negrea



Leanna Caron



Myriam Loriol Oberwiler



Sabrina Messmer



Mikhail Semenov

Program:

- Saturday, 20.07.2024:
 - Individual arrival
- Sunday, 21.07.2024:
 - Program Components Overview – Presentation with Leanna Caron
 - Composition and Presentation – 2 distinct components (on ice) + skating skills and 1 foot skating with Leanna Caron / Myriam Loriol / Sabrina Messmer
 - Feedback and Discussion with Leanna Caron
 - Dance with Sabrina Messmer
 - Acrobatics with Mikhail Semenov
- Daily Monday / Tuesday, 22./23.07.2024 and Thursday / Friday, 25./26.07.2024:
 - Dance with Sabrina Messmer
 - Acrobatics with Mikhail Semenov
 - Steps / Transitions and Spins with Myriam Loriol / Elena Romanova
 - Steps / Jumps / Spins and Program with Elena Romanova / Myriam Loriol / Marius Negrea and Sabrina Messmer
- Wednesday, 25.07.2024:
 - Level Overview – Presentation with Myriam Loriol
 - Dance with Sabrina Messmer
 - Steps/Jumps/Spins and Program with Elena Romanova/Myriam Loriol/Marius Negrea and Sabrina Messmer
 - Meeting with officials and coaches from the participating countries, LIE President Patrik Kaiser
- Saturday, 27.07.2024:
 - Dance with Sabrina Messmer
 - Steps/Jumps/Spins with Elena Romanova/Myriam Loriol/Marius Negrea
 - Show Skating (competition simulation) followed by dinner
- Sunday, 28.07.2024:
 - Departure

Registration:

Unfortunately, the invitation is being sent at a late date. We tried to counteract this problem through preliminary information. Therefore, we are happy to accept registrations for the camp from your federation, but also directly from coaches and skaters who received the forwarded information within their federation.

Please let us know by June 30th, and at the latest by July 7th, 2024, if your federation would like to participate in the training camp. Registration of participants for your federation, as well as individual registrations (forwarded by you to coaches and athletes), will be possible until July 7th, 2024. Participants from small nations and small federations will be given preference until June 30th, 2024. To register, please use the following link:

Registration

<https://docs.google.com/forms/d/e/1FAIpQLSdIYcX3pJopFE3C-oz51wuPkMPF9txNmAla-YTuals8wMquiw/viewform>

After successful registration you will receive an e-mail confirmation including the invoice and payment instructions. Payment deadline will be July 17, 2024.



Participants younger than 16 years

- Participants who have not yet reached the age of 16 require an accompanying person, confirmed by a parent's signature. This accompanying person can be their coach or someone else. Accompanying persons, coaches, or parents are responsible for their own accommodation. Recommendations for accommodation can be found below. For more information, please contact Mélanie Renggli at +41 78 742 21 09.
- For participants under 16 and over 8 years old without accompaniment, we offer supervised living at the "Chalet Laax" accommodation. Children under the age of 14 must have parents who are able to pick them up within a few hours in case of emergencies. The young participants will be supervised by Ms. Alina Sysoieva, who will act as the "living-community mom." She will be available to them and will also cook for them. However, sufficient knowledge of English is required. When registering, you can indicate that you wish for supervision at Chalet Laax by Ms. Alina Sysoieva through a separate declaration. *The supervising person is Ms. Alina Sysoieva; a native Ukrainian mother of a 10-year-old son. She was a professional English interpreter, has been living in Switzerland since the beginning of the war, and holds a German B2 diploma.*
- We request the corresponding signature of the guardians with the appropriate note to be sent to info@eislaufen.li. The corresponding form can be downloaded from www.eislaufen.li and is also attached to the accompanying email of this invitation.
- Accident and health insurance are the responsibility of the participants.

Insurance

Insurance is the responsibility of the participants. The SSC assumes no liability and responsibility for accommodations or any activities during and outside of training times.

Participants are encouraged to take out travel and course cancellation insurance when registering.

Disclaimer

Please note that the duty of supervision outside of the workshop units lies exclusively with the personal trainers or legal guardians. The organiser of the camp assumes no responsibility for any injuries. We explicitly point out that the organiser of the camp reserves the right to cancel the event in whole or in part if, for example, economic feasibility cannot be maintained or global events make it impossible to hold the event. In this case, no compensation will be provided for any costs incurred (e.g., cancellation of booked travel reservations) by the participants.

Important

- The participants of the courses should be healthy and sporty in the sense of mass sports.
- The caring for children beyond the time of training cannot be taken over by the tour operator unless special agreements have been made.
- Participants agree that photos taken during the camp can be used in publications, reports, on the homepage, and on social media of the LEV and the camp, and of the ISU.

Accommodation

Coaches and accompanying persons are responsible for their own accommodation. Here are some possible accommodations and contacts listed:

- Region and Tourism: <https://www.flimslaax.com/>

Hotel partners, some with special arrangements for course participants, please inquire directly and provide the following password for a discount: **Figure Skating 24**

- Camping Flims is located directly next to the ice rink:
<https://www.tcs.ch/de/camping-reisen/camping-insider/campingplaetze/tcs-campingplaetze/campingplatz-flims.php>
- 4 Stern Hotel Adula
7018 Flims Waldhaus | Tel:+41(0)81 928 28 28
info@adula.ch | www.adula.ch
- 4 Stern Hotel Schweizerhof
7018 Flims Waldhaus | Tel:+41(0)81 928 10 10
info@schweizerhof-flims.ch / www.schweizerhof-flims.ch
- 3 Stern Hotel des Alpes
7018 Flims Waldhaus | Tel:+41 (0)81 928 25 25
info@hoteldesalpes.ch / www.hoteldesalpes.ch
- 3 Stern Hotel am Waldrand
7018 Flims Waldhaus | Tel:+41(0)81 911 30 30
info@amwaldrand.ch | www.amwaldrand.ch

General Information about The Prau La Selva Sports Center

<https://sportzentrum-flims.ch/>

Top athletes, aspiring competitive athletes, and recreational sports enthusiasts alike will find an ideal environment at Prau La Selva among like-minded individuals and under the guidance of qualified sports professionals. This includes not only the optimal infrastructure of the sports facility but also the unique surroundings of the "Alpenarena" sports and recreation area, with its deep blue mountain lakes and endless forests in the heart of the Grisons mountains. Additionally, Flims offers a wide range of accommodation options.



The Prau La Selva Sports Center is located about a 15-minute walk from the legendary Lake Cauma.